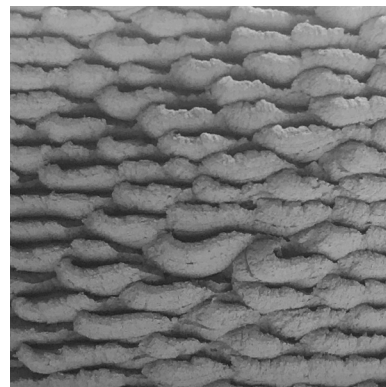
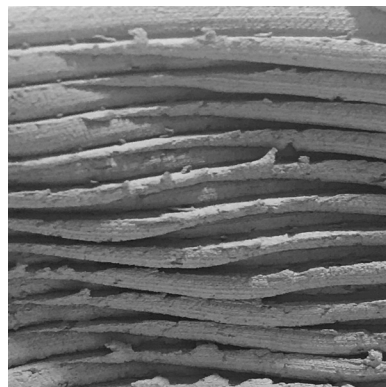
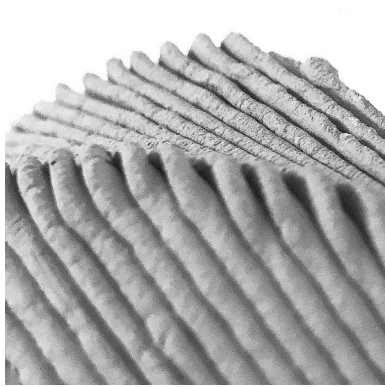
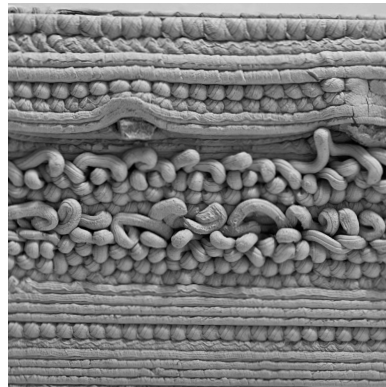
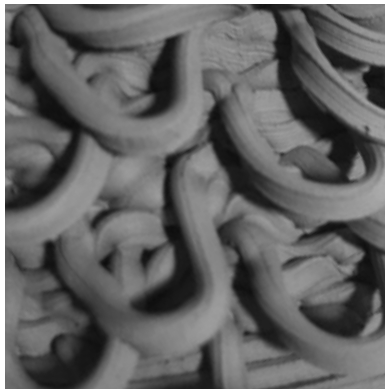
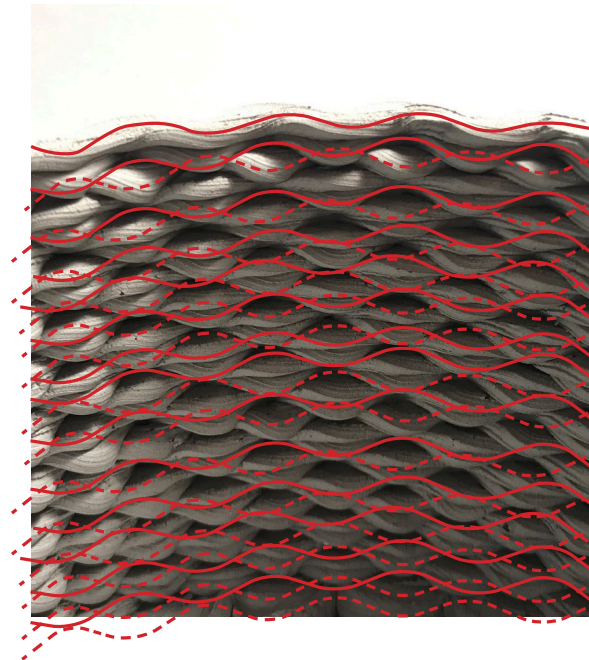
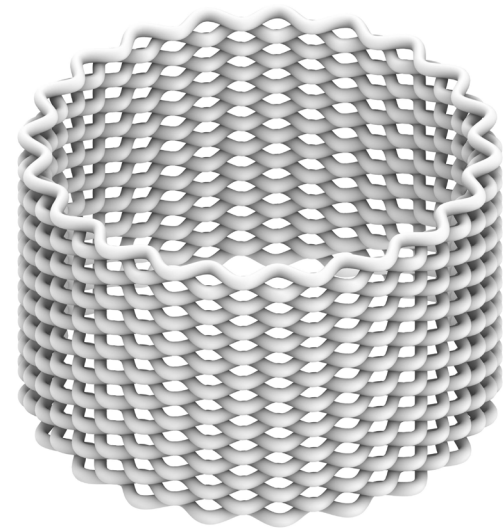
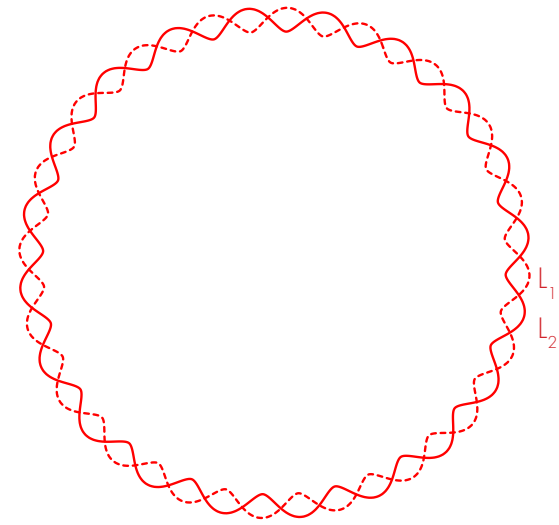


CERAMIC SYNTAX

A guide in creating different patterns and textures with the potterbot

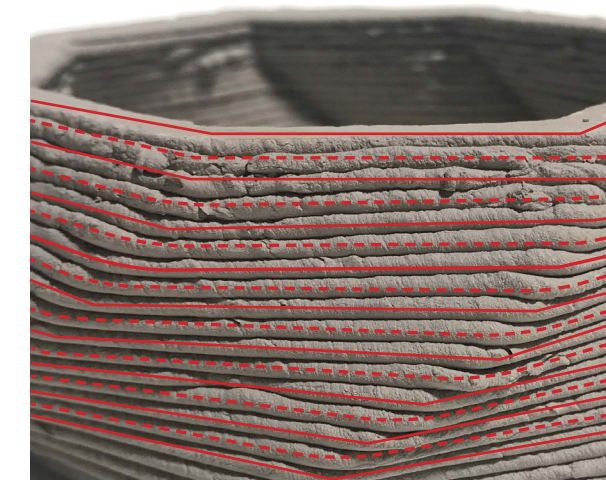
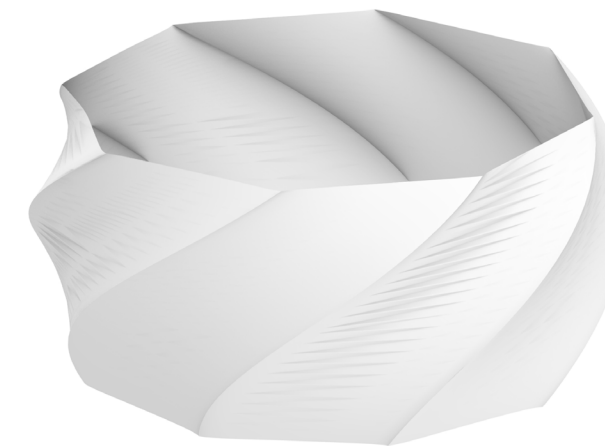
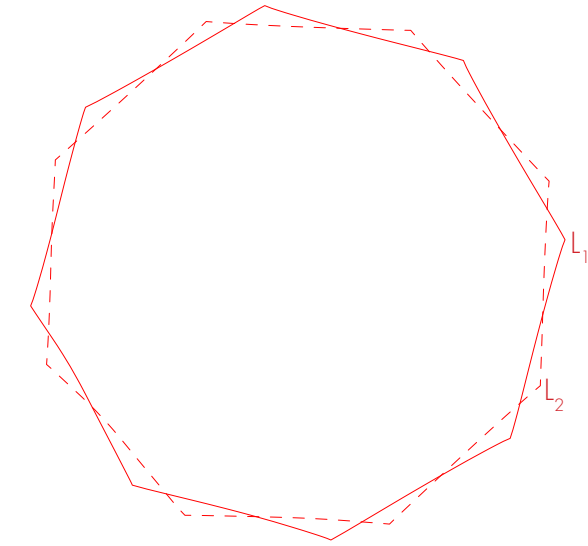
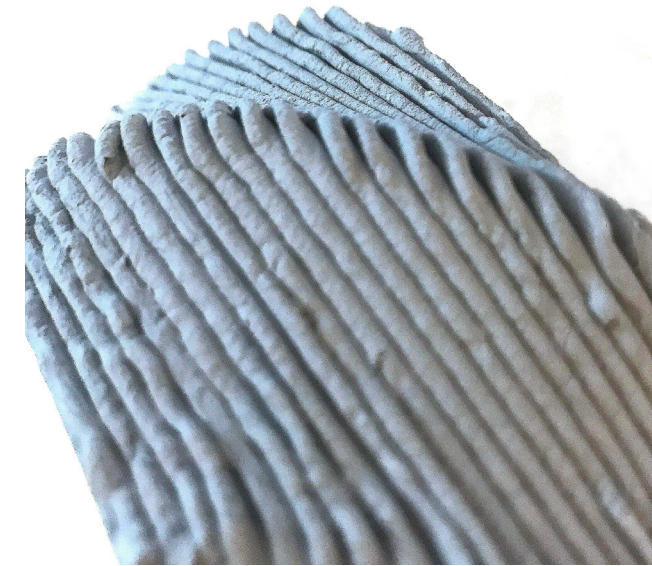


SYNTAX: Plain Weave



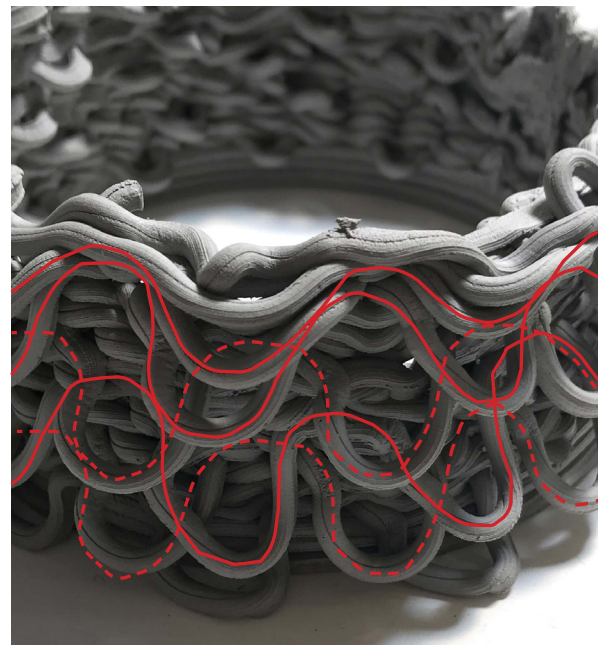
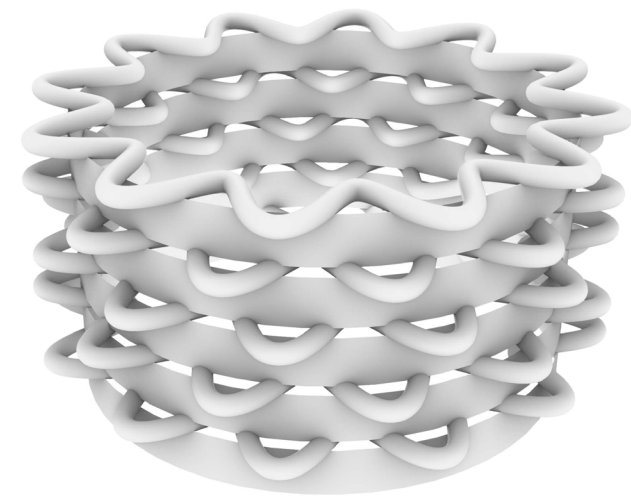
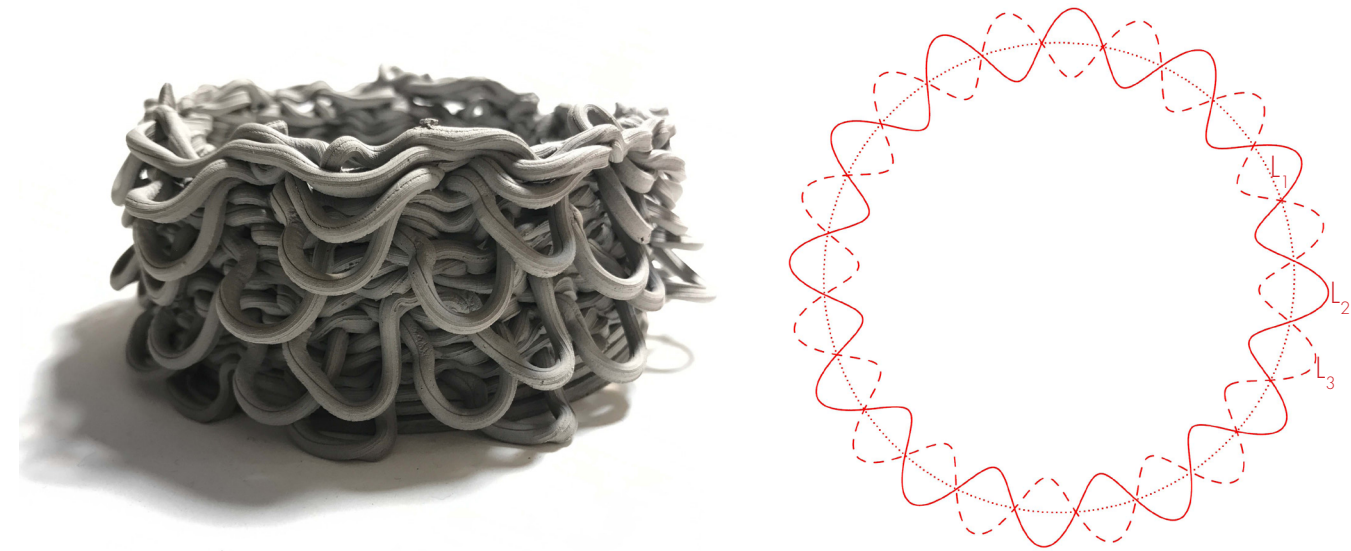
COMMAND 1: Circle
COMMAND 2: Helix(small amplitude)-->Around curve
COMMAND 3: Project to CPlane
COMMAND 4: Pipe

SYNTAX: Twist



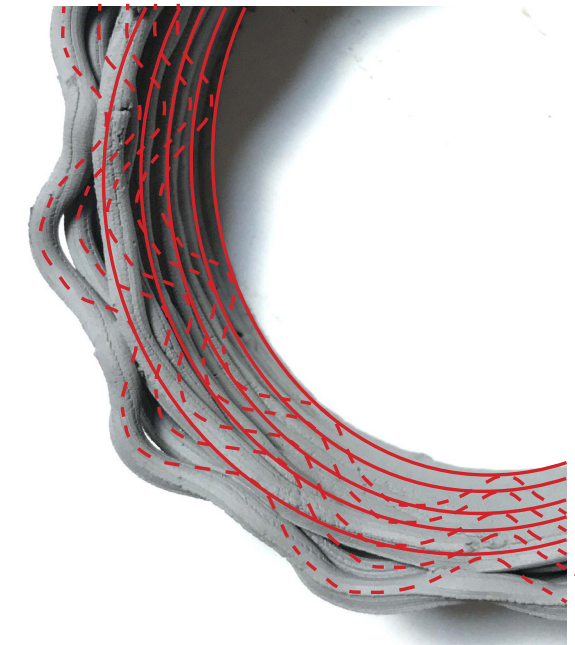
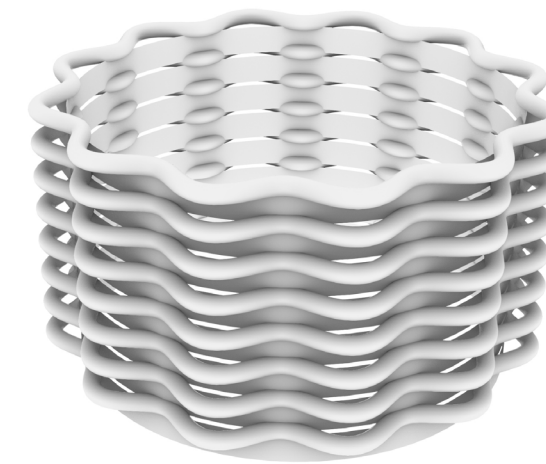
COMMAND 1: Polygon--> Octagon
COMMAND 2: Extrude
COMMAND 3: Twist-->30°

SYNTAX: Droop Loop



COMMAND 1: Circle
COMMAND 2: Helix (large amplitude)-->Around curve
COMMAND 3: Project to CPlane
COMMAND 4: Pipe

SYNTAX: Droop Loop

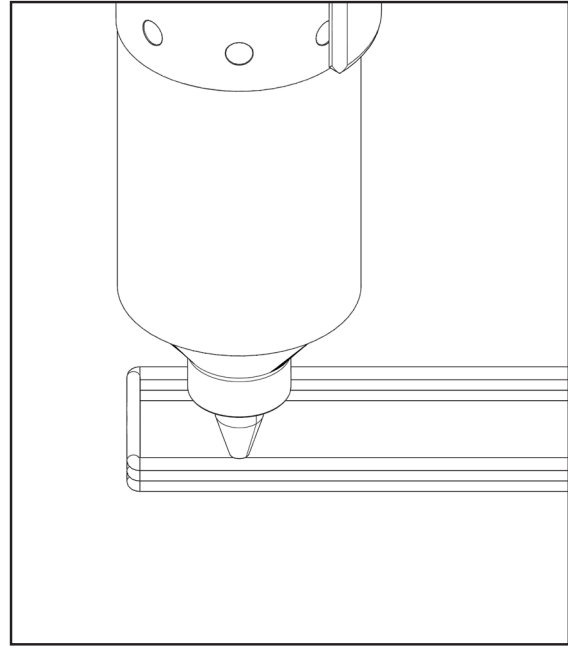


COMMAND 1: Circle
COMMAND 2: Helix (small amplitude)-->Around curve
COMMAND 3: Project to CPlane
COMMAND 4: Offset
COMMAND 5: Pipe

SYNTAX: Embedded

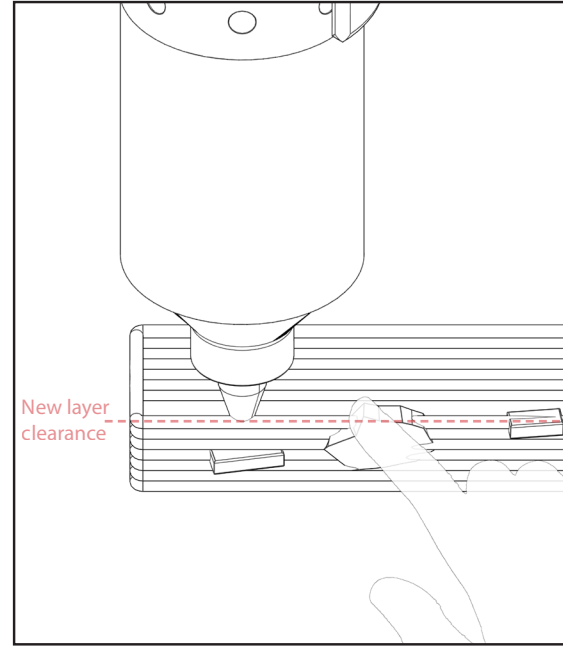
Step 1

Foundation layer



Step 2

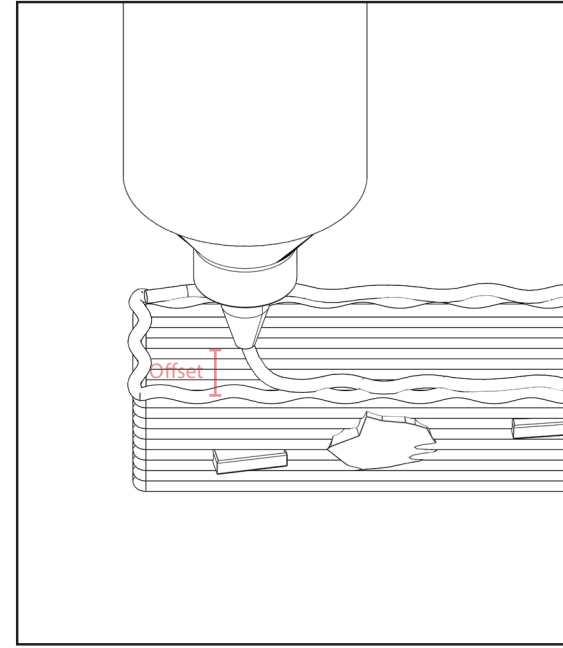
Embedding found objects



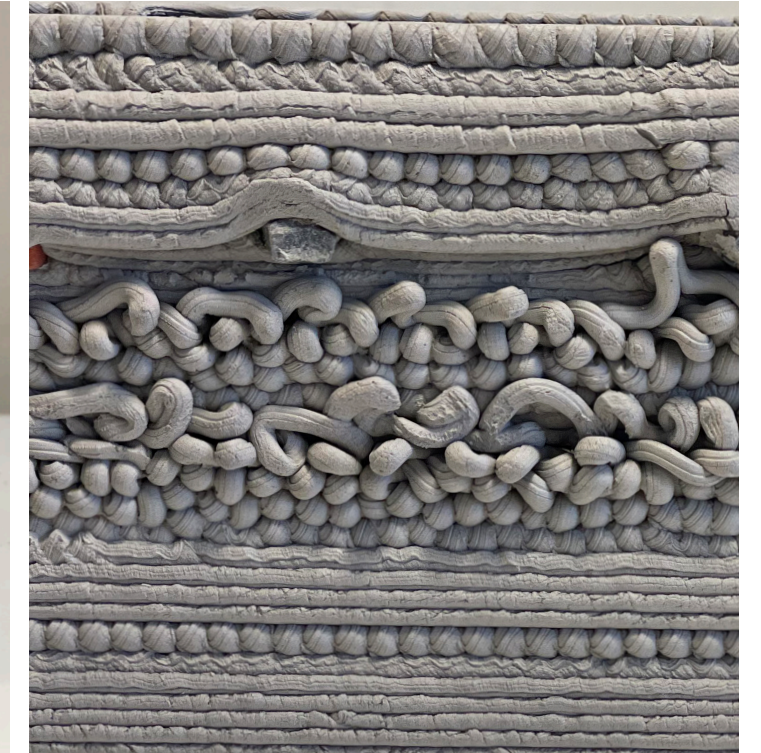
Found objects embedded into the layers below, below the new layer clearance line.

Step 3

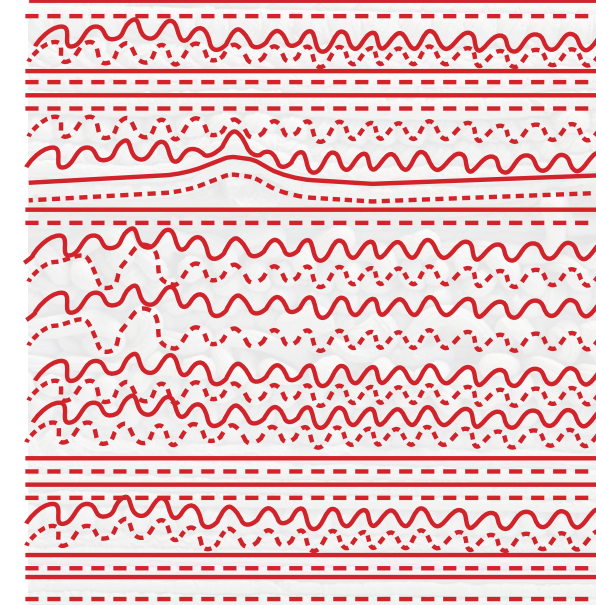
Burying found objects



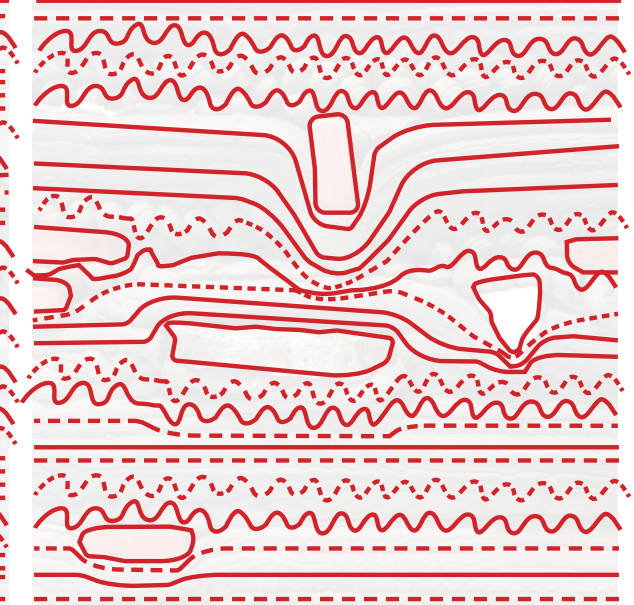
Nozzle offsetted upwards, extruded clay is laid in a zig zag manner due to the motion of the potterbot.



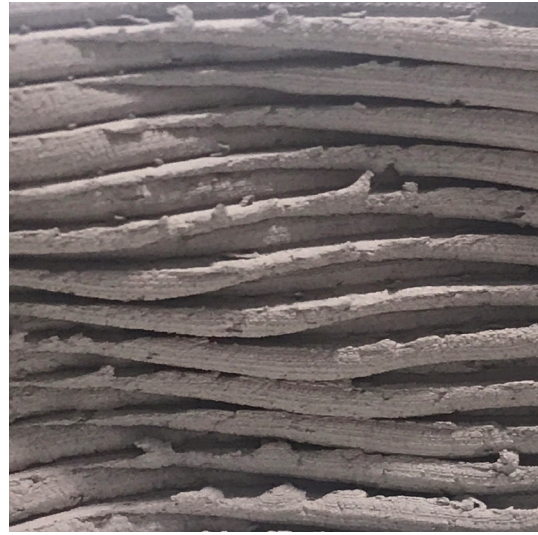
Plain weave façade



Embedded façade



ACCENTS: Nozzle Test



Different nozzles were also used to test 'accents' of the clay extrusions